

# MORGAN

SEWING & EMBROIDERY CENTRE

Serving the Wide Bay  
Burnett Area since 1970  
Shop 2 Melory Place, 53 Torquay Road,  
Pialba, Hervey Bay Q 4655  
Ph/Fax: 07 41244420

Email: [info@morgansewingcentre.com](mailto:info@morgansewingcentre.com)  
Website: [www.morgansewingcentre.com](http://www.morgansewingcentre.com)



Find us on  
**Facebook**

## THE MORGAN STITCH UP, MAY, 2021

Dear Customers,

### OUR HOURS ARE:

9 AM – 5 PM MONDAY – FRIDAY

9AM – 12 NOON – SATURDAY

### PHILL'S MOBILE MACHINE SERVICING

Maryborough, Gympie, Bundaberg, Gin Gin, Childers, Gladstone, Murgon,  
Kingaroy, Gayndah, Mundubbera, Eidsvold, Monto and Biggenden.  
(includes Industrial Machines)

He can also organise to set up at your Craft or Quilting Group if you have  
multiple machines to be serviced.

GIN GIN and BUNDABERG – Saturday, 1<sup>st</sup> May

MURGON – Tuesday, 4<sup>th</sup> May.

GLADSTONE – Monday, 10<sup>th</sup> and Tuesday, 11<sup>th</sup> May

AND Monday, 21<sup>st</sup> and Tuesday, 22<sup>nd</sup> June

GYMPIE – Thursday, 13<sup>th</sup> May and Friday, 18<sup>th</sup> June

MONTO – Wednesday, 9<sup>th</sup> June

MUNDUBBERA AND GAYNDAH – Thursday, 10<sup>th</sup> June

CREATIVE SEWING CLUB IS ON AGAIN – IN STORE!!!!

Our next Club Day is on Wednesday, 5<sup>th</sup> May. Two sessions – 9.30am-11.30am  
and 1pm – 3pm. Limited to 16 people each session!

### JANOME ARTISTIC DIGITIZER - FREE TRIAL

Registration will be available from the Janome Website from the 1<sup>st</sup> May until  
the 31<sup>st</sup> June, 2021. This is a great opportunity to try the software before you  
buy. Find out more here: [Janome Artistic Digitizer – Janome](#)

## CLICK THE LINKS FOR MOTHERS DAY SPECIALS:



**BROTHER:** [Brother-Australia-Mothers-Day-2021\\_Big-Book-Catalogue.pdf](#)

**JANOME:** [Janome-April-Mailer-2021.pdf](#)

**BERNINA:** [Mother's Day Sale 2021 - Promotions - BERNINA](#)

**BABYLOCK:** [BabyLock 2021 Mothers Day Catalogue.pdf](#)

**GIFT VOUCHERS AVAILABLE!**

## MACHINE SPECIALS:

**BROTHER Luminaire  
Innov-is XP2  
RRP \$20,199 or buy our  
Demo model for \$18,999**

[Luminaire 2 Innov-is XP2 | Brother Australia](#)

**BROTHER Stellaire XJ1**



**BROTHER Stellaire XE1 EMBROIDERY ONLY - \$8999**

<https://www.brother.com.au/en/products/all-sewing-machines/sewing-machines/stellaire-innov-is-xe1>

**BROTHER A150 – RRP \$999 – NOW only \$799**

[Sewing Machine Innov-is A150 | Brother Australia](#)

**BROTHER F420 – RRP \$1199 – NOW only \$999**

[Sewing Machine F420 | Brother Australia](#)



**BROTHER NV800E  
Embroidery machine  
\$2049**

[Embroidery Machine Innov-is NV800E |](#)

[Brother Australia](#)



**BERNINA Q24 AND Quilt Frame  
and Sit Down Quilting Packages Available.**

**BERNINA Q20 with Folding Table -  
\$11499**

**BERNINA Q16 NEW MODEL - \$9999**

[Longarm Quilting Machines – BERNINA Q-Series - BERNINA](#)



## BERNINA B570 – Now Available in store. \$4999

[BERNINA 5 Series Broschuere B535 EN low-res.pdf](#)

## JANOME HORIZON QUILT MAKER 15000 V3 \$10999



<http://www.janome.com.au/product/horizon-quilt-maker-memory-craft-15000/>

## JANOME MC550E EMBROIDERY ONLY MACHINE – RRP \$4999 – Floor Stock \$3999 with Trade (one only)

<https://janome.com.au/product-category/embroidery-machine/?s=550>



## NEW - JANOME CM7P SEWING/QUILTING MACHINE - RRP\$6599

<https://janome.com.au/product/cm7p/>



## JANOME SKYLINE S7 SEWING AND QUILTING MACHINE – RRP \$2999 NOW ONLY \$2499

[Skyline S7 – Janome](#)



## JANOME SKYLINE S3 SEWING MACHINE - \$1599

[Skyline S3 – Janome](#)

## JANOME MC9850 SEWING AND EMBROIDERY MACHINE RRP \$2499 Now only \$2299 (with trade)

<http://janome.com.au/product/memory-craft-9850/>



## JANOME AT2000D AIR THREAD OVERLOCKER RRP \$1699 Now only \$1599

<http://janome.com.au/product/at2000d-professional/>

## JANOME DC2050 –\$499

Features 50 Stitches, 3 Buttonholes, Needle Threader, Soft Machine Cover, Weight 5.4Kg PLUS BONUS valued at \$339 Quilting Accessory Kit includes Metal Foot Holder Ditch Quilting Foot Craft / Applique Foot – Open Toe ¼ Inch Seam Foot, Free Motion Foot – Open Toe, Wide Extension Table Walking Foot with guide – Open Toe.





**CUTTING  
MACHINES from  
\$599** (12" Artistic Edge)



[https://www.brother.com.au/brochures/SDX1200\\_Brochure.pdf](https://www.brother.com.au/brochures/SDX1200_Brochure.pdf)  
<https://janome.com.au/product/artistic-edge-cutters/>



**HORN SEWING FURNITURE**

<https://www.horn.com.au/horn-modular-range>

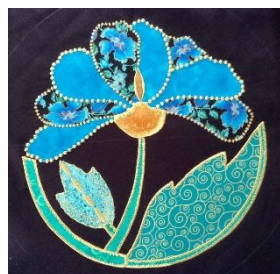
## CLUBS AND CLASSES

**CREATIVE SEWING CLUB – (16 people per session – bookings essential)**

**1<sup>st</sup> Wednesday of every month**, demonstration only to suit all makes and models of sewing and embroidery machines and overlockers, with notes provided on tips & techniques. Show & Tell & more. **TWO SESSIONS: 9:30am – 11:30am OR 1:00pm – 3:00pm - COST: \$40.00 per year**, giving you entitlements to in-store discounts. If you don't want to join the Club, just pay \$5 each time you attend a demonstration...this casual attendance excludes the 10% in-store discounts.

**MACHINE EMBROIDERY CLASSES – FRIDAYS (9am-1pm) and SATURDAYS (12.30-4pm) with Adele - \$20.** Join in at this hands-on class for BEGINNERS and ADVANCED Embroiderers, who wish to use their machine to its full capability.

**BEGINNER BASIC MACHINE EMBROIDERY CLASSES (Skill Building Techniques) with Rosie - 9am – 1pm - \$30.** Ring to enquire about dates and Book in – Group 1 – Thursday, 13<sup>th</sup> May. Group 2 – Wednesday, 19<sup>th</sup> May. Basic embroidery classes with Rosie. Held once a month, dates vary. Learn features on your embroidery machine and different techniques. Different projects and skill levels available.



**APPLIQUE CLASSES – with Rosie - 9am – 1pm - \$30.** Ring to enquire about dates and Book in.

Group 1 – Thursday, 6<sup>th</sup> May. Group 2 – Thurs, 20<sup>th</sup> May  
 Applique classes with Rosie, held once a month, various projects and skill levels available. Exploring the features on your machine. Requirement List provided with deposit.

**BASIC FREE MOTION WORKSHOP – with Rosie – Date to be advised – 9am – 1pm \$30 per Class.**



**BASIC OVERLOCKER WORKSHOP – with Robyn – Date to be advised - 9am – 3pm - \$60** – A hands-on workshop where you learn how to master your overlocker! In the morning we go through threading, general over locking techniques and what all the buttons and dials are for. In the afternoon we make a small bag using rolled hem, pintucks and gathering. All fabric is supplied. Book Now and pick up your Requirements List for this informative workshop.

**CHILDREN'S LEARN TO SEW CLASSES - AGE LIMIT 10 YEARS - Thursdays, 3.30 – 5.30pm – 13<sup>th</sup> 20<sup>th</sup> 27<sup>th</sup> May and 3<sup>rd</sup> June.**

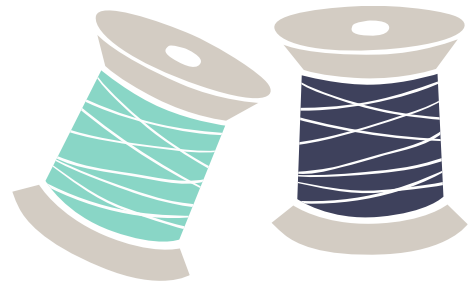
All fabric and thread supplied.

From \$70 per week for 4 weeks – includes the purchase of a new sewing machine to take home on completion of the course and full payment of the sewing machine. (ie. Janome FD206 while available.)

**Option 2** - \$30 per week (with own sewing machine) for 4 weeks.

Learn threading, beginner sewing techniques and make a project.

**STAY SAFE!  
AND HAPPY SEWING!!!**



Happy Sewing! Phill, Amie, Robyn, Rosie, Adele, Karina, Lee-Anne & Josh